



# A SERIES ELECTRIC FORKLIFT TRUCK

1.5-3.0 ton 4-wheel



*We work for maximal*

Zhejiang Maximal Forklift Co.,Ltd.

Address No.1,Jinxin Road,Lushan  
Industrial area,Fuyang,Zhejiang China  
Tel 0086 571 28205156  
Fax 0086 571 28001569

Email info@maxforklift.com  
For service  
service@maxforklift.com  
For spare parts  
parts@maxforklift.com



All rights reserved.  
Any doubt,please contact us.  
Website www.maxforklift.com



*A Series Forklift ranges from 4-wheel 1.5-3.5T. Design concept is "Engineering for Driver". Maximal engineers have focused on improving the comfort and safety for this new model, with more safety, more comfort, and every small detail carefully designed prepared for the driver.*

## Overhead guard



Welded by high strength special pipe to provide more safety, to make the forklift looks more beautiful.

## Big operating space



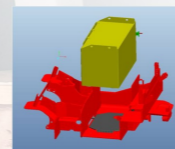
Small dimension, simple appearance with bigger operating space, it makes a easily passing in narrow channel and a better operator's driving comfort.

## Integrated transmission and axle



Adopt advanced integrated transmission and axle, with compact structure, provides convenient maintenance, decrease noise 3dB.

## Protection plate



Protection plate is equipped at the bottom of the battery to protect the oil pipe and electrical wire harness.

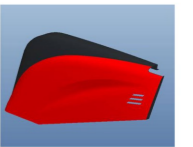
## AC controller

Adopt Italy ZAPI ACE2 new generation controller, more stable, more durable.



## Steel side plate

Both right & left side plates are made of steel, it increase the forklift strength, also be higher for versatility.



## Horizontally layout of controller



Lay the controller horizontally on the counter balance to avoid the controller damage when reversing. And it makes the electrical system arrangement more reasonable for easy maintenance.

## L-type pump motor

Adopt L-type pump motor make it much easier when disassembly & assembly and maintenance.



# Performance Improvement

- **High efficiency, speed Improvement**

	Speed (km/h)	Improvement (%)
Climbing(laden)	4	100
Driving(laden)	15	25
Lifting(laden)	275	5

- **Wide view mast**

Significantly improves the driver's front field of view, reduces dead zones, and increase the safety and comfort of the operation.  
**Outside width of the mast: 720mm, 30mm increased.**



- **Noise decrease**

Integrated transmission and axle decreases noise 3dB.

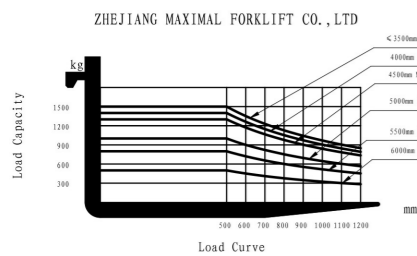
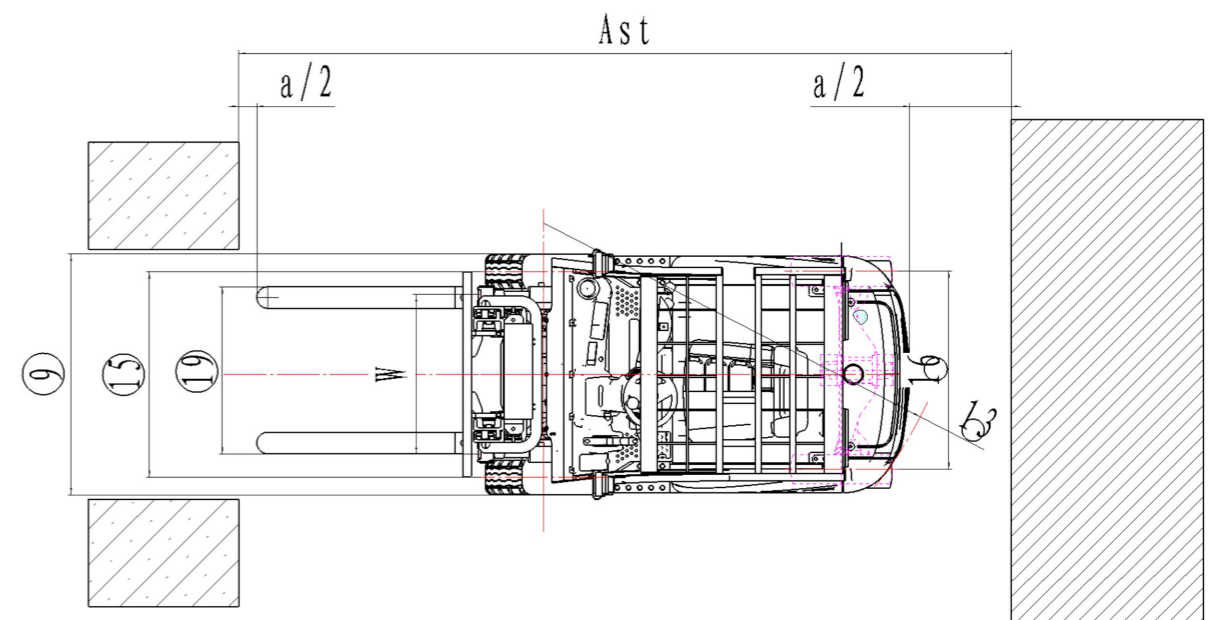
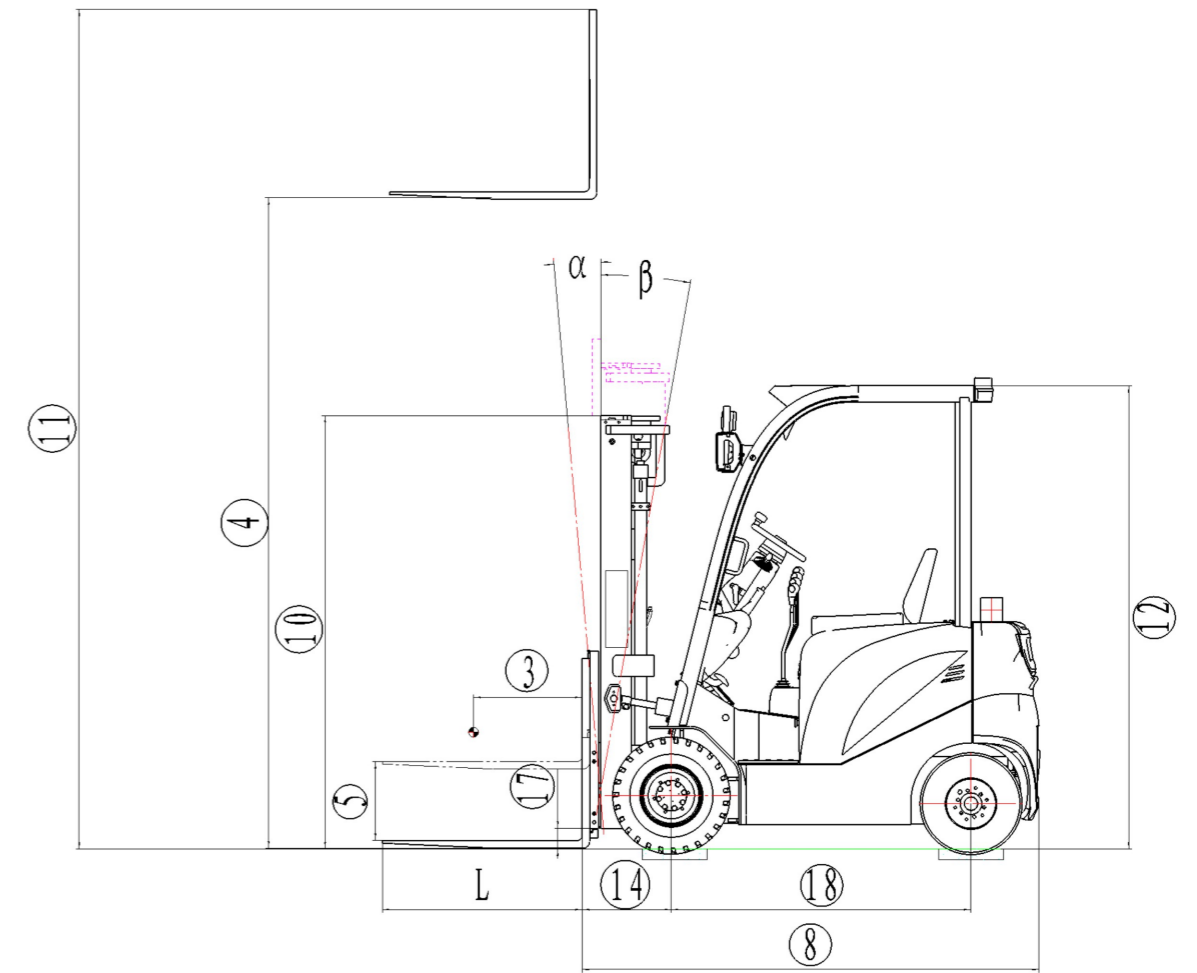


- **Smaller size**

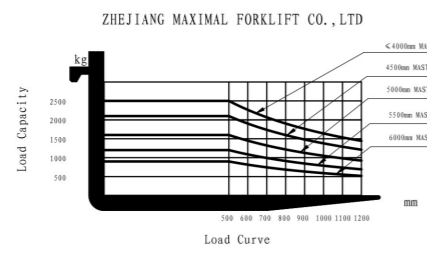
3-5% shorter forklift length, 5% weight decreasing provides the easier operation.

# A series 1.5-3.0t electric forklift

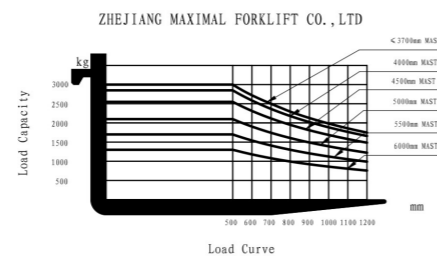
A series 1.5-3.0t 4-wheel electric forklift										
Specification	1	Model		FB15-AJZ	FB18-AJZ	FB20-AJZ	FB25-AJZ	FB30-AJZ		
	2	Rated capacity	kg	1500	1800	2000	2500	3000		
	3	Load centre	mm	500						
	4	Lifting height	mm	3000						
	5	Free lifting height	mm	135	140	165				
	6	Fork size	L×W×T	mm	35×100×920		40×122×1070		45×125×1070	
	7	Tilting angle	F/R (α° / β°)	Deg	5/10					
Dimensions	8	Overall Dimension	Length (to forkface)	mm	2073	2118	2286.5	2548		
	9		Width	mm	1120		1285	1285		
	10		Height when mast lowered	mm	2000	2015	2045			
	11		Height when mast extended	mm	3980	3990	4100			
	12		Height to safeguard	mm	2135	2152	2152			
	13	Turning radius	Min.	mm	1965	2080	2349			
	14	Front overhang	mm	410	454	475				
	15	Tread	F/R	mm	955	1058	1065			
	16	Tread	F/R	mm	920	960	980			
	17	Ground clearance	Min.	mm	105	95	110			
	18	Wheelbase	mm	1380	1485	1670				
	19	Fork spread	Min./Max.	mm	250/890	250/1000	250/1060			
	20	Working aisle width with pallet(Ast)*	1000×1200 crossways	mm	3541	3732	4025			
21	800×1200 lengthways		mm	3741	3932	4225				
Performance	22	Speed	Travel(Laden)	km/h	15	15	15			
	23		Travel(Unladen)	km/h	16	16	16			
	24		Lifting(Laden)	mm/s	290	280	280			
	25		Lifting(Unladen)	mm/s	440	400	400			
	26	Gradeability	Laden	%	15	15	15			
	27		Unladen	%	15	15	15			
	28	Service weight	Include battery box	kg	2950	3230	3930	4100	4750	
29	Tyre	Front×2		6.00-9 10PR		23×9-10 16PR		23×9-10 16PR		
30		Rear×2		5.00-8 8PR		18×7-8-14PR		18×7-8-14PR		
Driven	31	Motor	Driven motor	kw	K6.5		K8.5		K11.5	
	32		Pump motor	kw	K8.6		K11		K15	
	33	Battery	Standard(Optional)	V/Ah	48/420		48/600		80/500	
	34	Controller	Type		AC	AC	AC	AC	AC	
	35		Manufacturer		ZAPI	ZAPI	ZAPI	ZAPI	ZAPI	
	36	Operating pressure for attachment	Mpa		14.5	17.5	17.5			



1.5T Load Chart



2.5T Load Chart



3.0T Load Chart